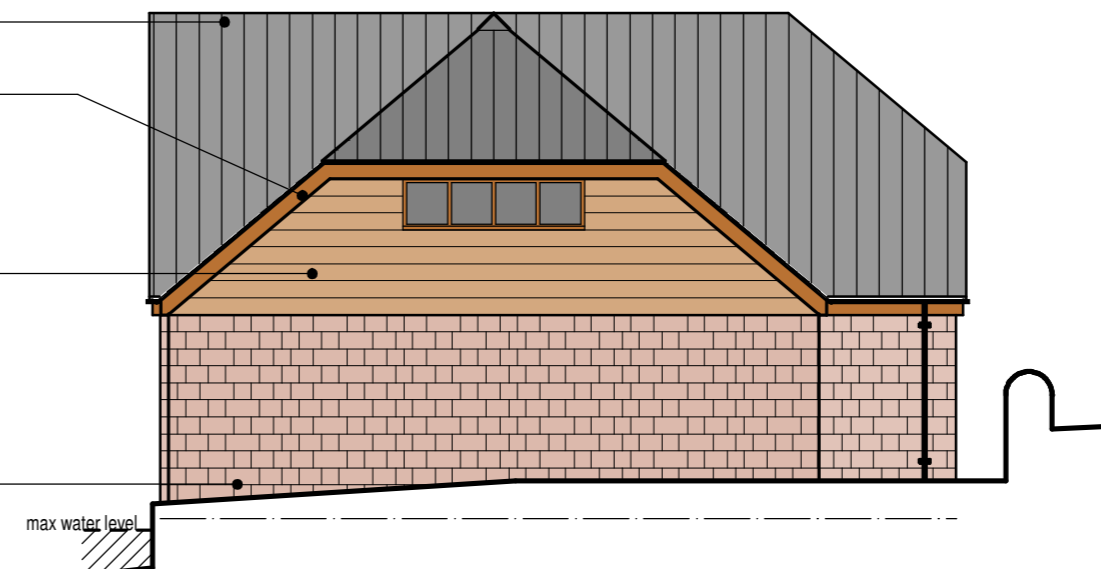
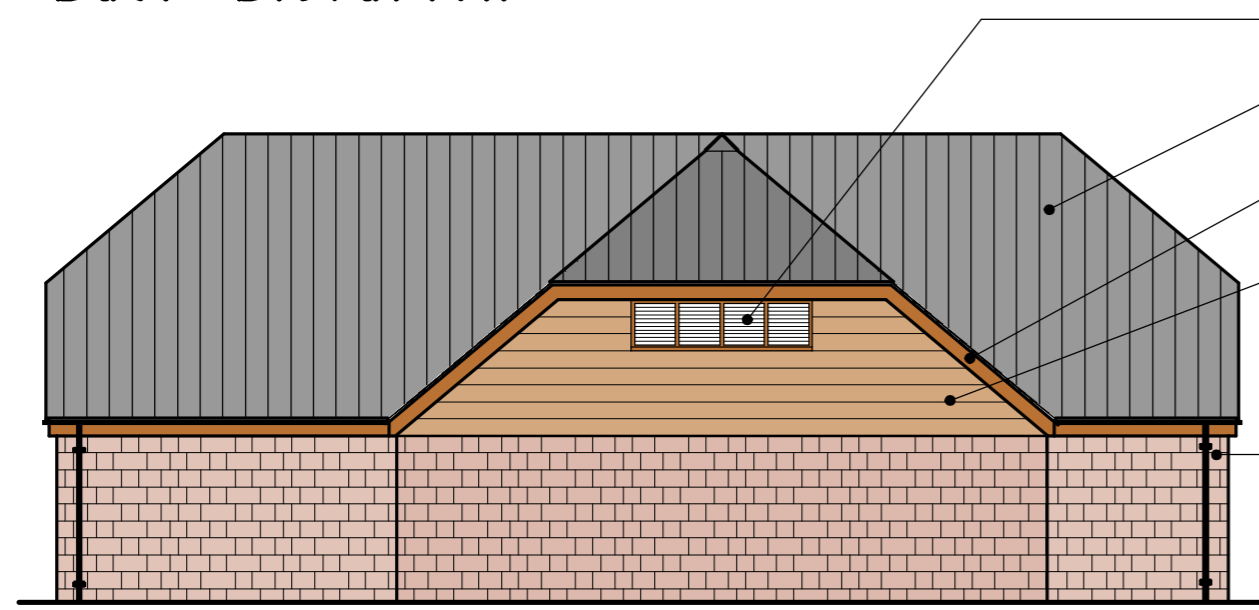


East Elevation

- Slate roof covering to later approval
- Dark stained natural timber fascia, barge board and soffit
- Natural finish vertical timber boarding
- Natural finish timber horizontal cladding
- Black finish to guttering
- Dark stained timber windows having natural stone heads and cills
- Natural coursed stone to later approval
- Dark stained natural timber doors with glazed vision panels and mesh lower section below potential peak water level



North Elevation

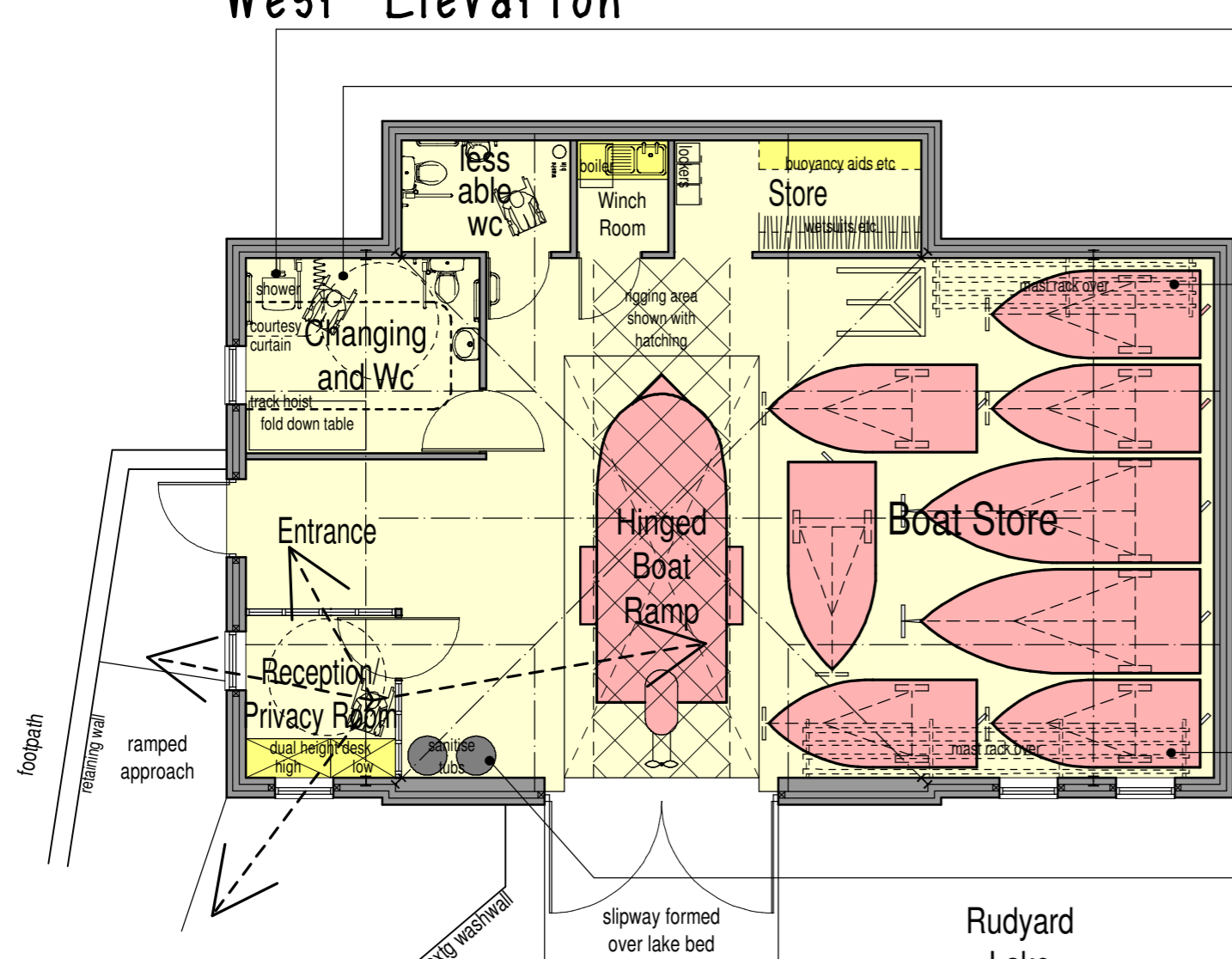
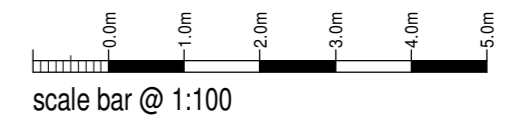


West Elevation

- Dark stained timber vents
- Slate roof covering to later approval
- Dark stained natural timber fascia, barge board and soffit
- Natural finish timber horizontal cladding
- Dark stained timber windows
- Black finish to guttering
- Dark stained timber windows having natural stone heads and cills
- Natural coursed stone to later approval
- Dark stained natural timber door with glazed vision panel

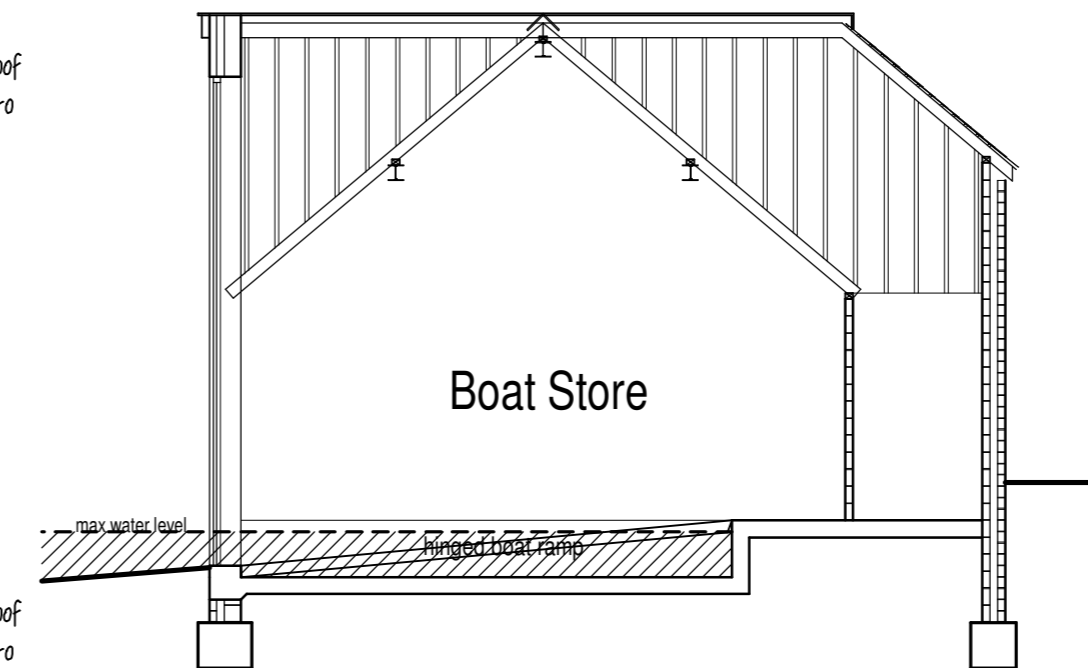


South Elevation



Ground Floor Plan

- Courtesy curtain around twin headed shower
- Changing and shower room to be fully fitted out to minimum BS8300 accessible to all standard
- electrically operated 'cradle' suspended from roof structure that can be raised and lowered to accommodate mast storage
- electrically operated 'cradle' suspended from roof structure that can be raised and lowered to accommodate mast storage
- 2 no. 600mm diameter "wetsuit" sanitize tubs and rope cupboard over
- Note - concrete floors are to be laid at slight falls to drainage channels (not shown at this stage for clarity)



Cross Section

# Rudyard Sailability Rudyard Lake Ltd British Waterways

PROPOSED REPLACEMENT BOAT HOUSE AND AMENITY FACILITIES, RUDYARD LAKE NR LEEK, STAFFS. PLANNING PROPOSAL PLANS AND ELEVATIONS

Date	Sheet	Scale
MARCH 2010	A2	1:100
Dwg No.	Rev.	Drawn
2007-1494-14	E	RG

A - 06/03/2010 - LIFT POSITION REVISED  
 B - 16/03/2010 - REVISIONS REQUESTED BY CLIENT  
 C - 11/05/2010 - REVISIONS DISCLOSED WITH ALL APPLICANTS  
 D - 12/05/2010 - REVISIONS DISCLOSED WITH ALL APPLICANTS  
 E - 14/05/2010 - PLAN UPDATED FOR PLANNING SUBMISSION



10 Cawdry Buildings, Fountain Street, Leek, ST13 6JP  
 Telephone + Fax 01538 386002  
 E-mail: info@sammonstld.co.uk

This drawing is copyright. Do not scale.  
 All dimensions must be checked prior to commencement.